

PROFILE

SREE BALAJI ENGINEERING WORKS

E-08, SIDCO Industrial Estate Phase II
Valavanthan Kottai, Trichy - 620015

Tamil Nadu, India

Ph: 91 0431 6522040, 09952848928

kris@krislinkbiz.com

www.krislinkbiz.com

About Us

We have pleasure in introducing ourselves as one of the leading structural fabricators in Trichy (Tamil Nadu, India) with over three decades of experience started in the year 1978 in the manufacture/fabrications of steel structural's component and pressure parts & erection works.

We have immense pleasure to be a business partner/Subcontractor with M/s BHEL, Trichy - 620014 the world's leading power manufactures.

Our Top Management K.Maruthavanan (25 years of Multinational EPCI contracts + Fabrication) + C.Gunasekaran (30 years of Managing Fabrication yard) have gained confidence in the mind of customer demonstrating Impeccable integrity/ and professional attitude . They are committed to Manufacture and Supply of Products to the highest QUALITY in total conformance with expectations of our Customers through Delivery schedules, Customer Satisfaction and Continual improvement of the Quality Management System.

Following are the services provided by us but not limited to :

- A. Heavy Structural Fabrication
- B. Manufacture of components for power plant equipment namely boiler, heat exchanger, auxiliaries, HRSG, WHB, low and High pressure piping, structures etc., conforming to requirements of ASME, ANSI,IBR, etc.,
- C. IBR related Fabrication and Erection Jobs
- D. Site Erection and Fabrication



'+' Column



Exhaust Duct



Bottom Cover



Transportation



Tank



Cyclone



Wind Box Assembly



Diverter with Blanking Plane



Y-Duct Assembly



Pressure Vessel



Girders



Inner Top Cover (Side View)



Blade for Isolators



Inner Top Cover Assembly



Package Boiler

Quality Policy

SBEW mission is to achieve and maintain excellence in quality, reliability and safety of all the products to the maximum satisfaction of the customer.

- To continually improve the technology, skill level of personnel and work environment
- To all applicable regulatory requirements shall be met related to product and
- Effectiveness of Quality Management System by reviewing and upgrading the Quality Objectives at all functions.

Quality Objective

The main quality objectives of the company are:

- To achieve and maintain a level of quality which enhances the Company's reputation with customers.
- To ensure compliance with relevant statutory requirements.
- To train and motivate the employees
- To ensure cleanliness and good housekeeping

About Management

K. MARUTHAVANAN (KRIS) - B.E., M.B.A

MANAGING PARTNER-SBEW & CEO OF
M/S KRISLINK ENGINEERING CONSULTANTS
kris@krislinkbiz.com
www.krislinkbiz.com

Profile

A Professional Mechanical Engineering who has Accomplished, versatile & trusted executive with high-growth, start-up and international experience. Partners with business leaders to shape business goals and customer needs into reliable & efficient solutions.

Leadership profile with over 23 years of demonstrable international experience spanning general management skills; proven track record of leading & motivating large multi-cultural & geographically distributed teams to deliver on organizational goals.

Strong functional skills in Quality Management (QA-QC), Safety Management, Risk Assessment, Project Management, Commissioning, Integrated Management in Onshore and Offshore Operations. Strong domain skills in Oil & Gas and Manufacturing.

Hands-on & adept at running metric-driven business organizations and has handled multi-faceted roles viz. Project Consulting, Entrepreneur-style business turnarounds, P&L ownership, start-up operations, global expansions, etc

Profile

Singapore (Permanent Resident), India, Sultanate of Oman, Kuwait, Dubai, Qatar, Saudi Arabia, Thailand, Indonesia, Malaysia, Vietnam.

Key Skills

- | | | |
|---|---|---|
| <ul style="list-style-type: none">- Project Management (EPCI)- Quality Management- Audit (Technical /Compliance)- People Management- Safety Management- Risk Assessment- Value Assurance Review | <ul style="list-style-type: none">- Business Development- Welding Inspection- NDT Coordination- Vendor & Subcontractor evaluation/Assessment- Compliance & Certification- HSE case Study | <ul style="list-style-type: none">- Process Mapping- Integrity Management- Training& Continuous Improvement- Technical Integrity Verification- Interface Management |
|---|---|---|

Client Endorsements

SHELL | CONOCO PHILIPS | HALLIBURTON | PETROLEUM DEVELOPMENT OMAN | PTTEP | TOTAL | ONGC | ROCKOIL AUSTRALIA | CULLONG | PETRONAS MALAYSIA | PETROVIETNAM | PREMIER OIL| TULLOW GHANA

Prestigious Client Associated with

- | | |
|---------------------------------|---|
| - Shell (Sarawak/Malaysia) | - Halliburton/KBR (Singapore) |
| - Electrowatt Engg Zurich(Oman) | - J Ray Mcdermott (Singapore) |
| - Bureau Veritas(Kuwait) | - American Bureau of shipping (Singapore) |
| - Worley Parsons(Saudi) | - Nippon Steel (Thailand) |

Salient Profile Highlights

- Experience of Senior Management Position and Service experience in handling Fabrication and Erection related jobs.
- QHSE leader for EPCI/ FPSO Conversion Projects
- Heading/ Managing QA & QC for Major Onshore/Offshore EPCI Projects
- Front End Engineering, Construction Support, Commissioning Support, Quality Management Support, Safety Management support, Training support Held leadership positions in QM/ QC/ QHSE across construction, engineering, procurement, fabrication, expansion, transportation and installation of offshore facilities, fixed platforms, topside facilities and sub-sea pipelines

Machinery/Facility Details (UNIT - 1)

TOTAL SBEW LAND AREA	: 3 ACRES
OFFICE AND RELEVANT	: 145 SQ.M
POWER CAPACITY	: 145 HP
OFFICE STAFF	: 8
CONTRACT MANPOWER	: 30
COVER SHED	: IN THE VERGE OF BUILDING A SHED

SL NO	DESCRIPTION OF FACILITY	QTY
1	A FRAME (LIFTING CAPACITY – 10 TONNES)	1
2	Rotator (Holding capacity 40 Tonnes)	1set
3	A frame to suit welding of Foundation cans	1
4	Auto Welding Machine	1
5	WELDING MACHINES (MMAW) (40- 400 AMPS)	12
6	PILLAR DRILLING MACHINE (Dia 40 mm Max)	1
7	AG5 GRINDING MACHINES	10
8	AG7 GRINDING MACHNES	10
9	ELECTRODE BAKING OVEN	1
10	PORTABLE OVENS	4
11	PUG CUTTING MACHINES	3
12	MAGNETIC PARTICLE TESTING EQUIPMENT	1
13	PAINTING COMPRESSOR	1

Machinery/Facility Details (UNIT - 2)

TOTAL LAND AT SIDCO D.P ESTATE

TRICHY - 15 AREA : 1ACRES

TOTAL LAND AT SIDCO VALAVANTHANKOTTAI ESTATE

TRICHY - 15 AREA (ADJACENT TO SBEW YARD) : 2 ACRES

COVER SHED : 3200 SQ.FT

POWER CAPACITY : 130 HP

OFFICE STAFF : 15

CONTRACT MANPOWER : 50

SL NO	DESCRIPTION OF FACILITY	QTY
1	Welding M/c Invertor Based, Ador Fontech Welding M/c 400 CR, Ador Fontech Weldig M/c 401	1
2	Sun Power Invertor 400	1
3	Advani Comp T 400 Welding M/c	2
4	Memco Welding M/c	4
5	Esab Rectifier	1
6	Advani Transformer	1
7	Diesel Power Generator 62.5 KVA	1
8	Advani Generator	2
9	Ador Welding M/c Rectifier	1
10	Single Phase Welding M/c Arc 200	1
11	Autowelding M/c (Ador – 1, Advani- 1)	2
12	Plate Bending Machine T:12mm W:2500mm	2
13	Drilling Machine EIFCO (Ø32)	2
14	Magnetic Drilling Machine (KPT-1, WOLF-1)	2
15	Column Drilling Machine	1
16	Portable Grinders (WOLF-7, KPT – 7,HITACHI-2 MASTECH-2)	18
17	AG5 GRINDING MACHINE BOSCH	5
18	Mobile crane	1
19	Tig Torch	1
20	Cutting torches	12

Machinery/Facility Details (UNIT - 2)

SL NO	DESCRIPTION OF FACILITY	QTY
21	Pug Cutting M/c	8
22	Oxygen Regulator	16
23	LPG Regulator	16
24	Mpi M/c	1
25	Flexible Grinding M/c	1
26	GQ4	2
27	GQ6	1
28	Bench Grinding M/c	2
29	Chambering M/c	1
30	Hydraulic Press	1
31	Air Compressor ELGI	1
32	Dye Grinding M/c	2
33	Hydro Pump Set	1
34	Indarc Electrode Oven 350°	1
35	Flux Oven (Kumar Electricals) 250°	1

Machinery/Facility Details (UNIT - 3)

Total SBEW Land Area	: 2.04 ACRES
Office and Relevant	: 145 Sq.m
Power Capacity	: 145 HP
Office Staff	: 8
Contract manpower	: 30
COVER SHED	: 5400 sq.ft

Sl.No.	Description	Qty.
1	EOT Crane 12 Ton Capacity	1 NO
2	MOBILE CRANE -12 Ton	1 NO
3	Radial Drill Machine Dia -62 mm Boom Length - 2 Mtrs.	1 No.
4	Lathe L -10.5 Feet Spindle Dia 90 mm	1 No.
5	Power Axe Machine	1 No.
6	Bench Grinding Machine	1 No.
7	Auto Welding Machine	2 Nos
8	Welding inverter	9 Nos.
9	Grinding Machine AG-7	9 Nos
10	Grinding Machine AG-5	1 No
11	Grinding Machine AG-4	2 Nos.
12	Pug Cutting Machine	2 Nos.
13	Magnetic Drilling Machine	1 No.
14	Cutting Torch	8 Nos.
15	Electrode Packing Oven	1 No.
16	Portable Flask Oven	4 Nos.
17	MPI Machine	1 No.
18	Hydraulic Press	1 No.
19	Calibrated Mesuring Instruments	
	i) Measuring Tape - 3Mts	2 Nos.
	ii) Measuring Tape - 20Mts	2 Nos
	iii) Mesuring Tape - 30Mts	1 No
	iv) Vernier Caliper	1 No
	v) Micro Meter	1 No
	vi) Paint Coat Meter	1 No
	vii) Thermal Chalk 100 -600	1 No (Each)

Company Approvals

REGISTRATION OF FIRMS	: 173/2088 DATED 28-03-2008
INSPECTOR OF FACTORIES	: REG NO : 2837 LICENCE NO:19221
PAN CARD	: ABOFSO144E
SSI NO.	: 330 1512 / 00793E PART 1
TIN NO.	: 338 735 642 66
CST NO.	: 928463 DT. 03.06.08
SERVICE TAX	: ABOFS0144ESD001
ESI	: NOT APPLICABLE
PF REGISTRATION NO	: B-4/TN/76955
E-TDS NO (TAN)	: CHES33387E
BHEL VENDOR CODE	: E-10,31547

Projects Completed

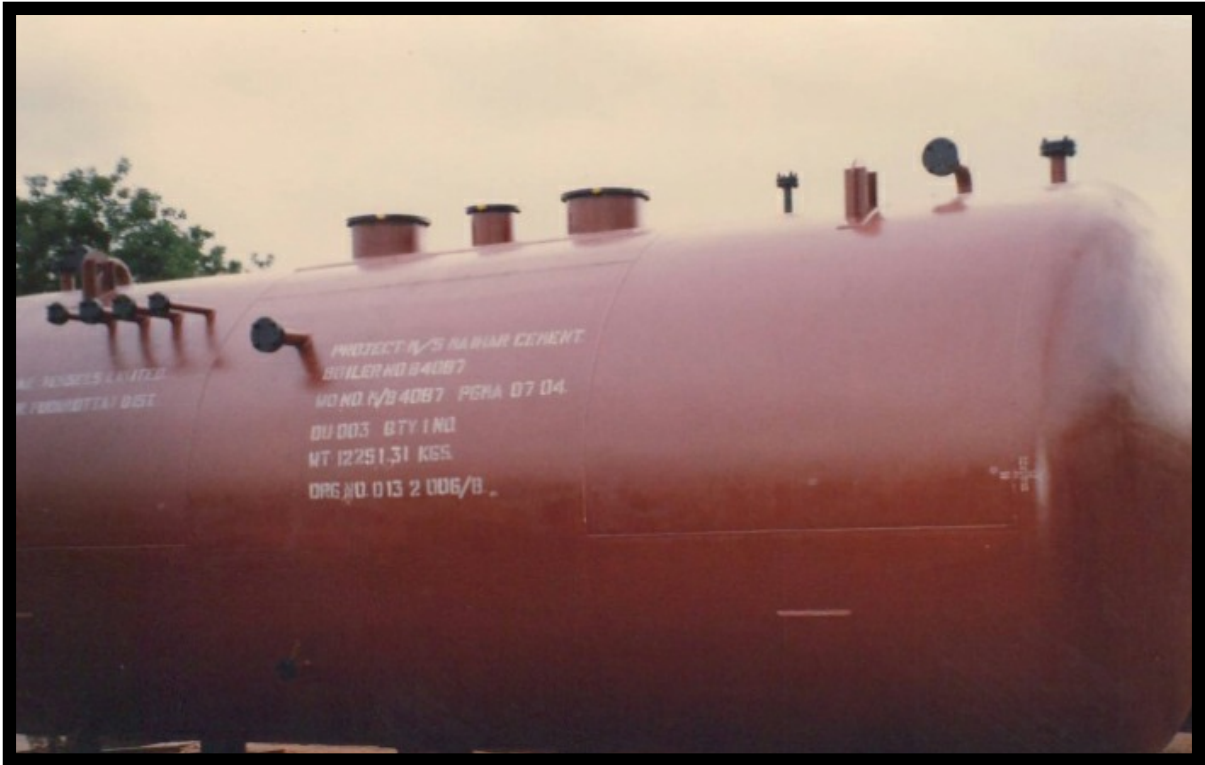


PRODUCT : **TRANSITION DUCT WALL**
CLIENT : M/s BHEL Trichy



PRODUCT : **TRANSITION DUCT WALL**
CLIENT : M/s BHEL Trichy

Projects Completed



PRODUCT : **TRANSITION DUCT WALL**
CLIENT : M/s BHEL Trichy



PRODUCT : **RPT FOUNDATION CAN FOR TOOLFAB ENGG INDUSTRIES (P) LTD**
CLIENT : M/s Regen Powertech & M/s Winwind

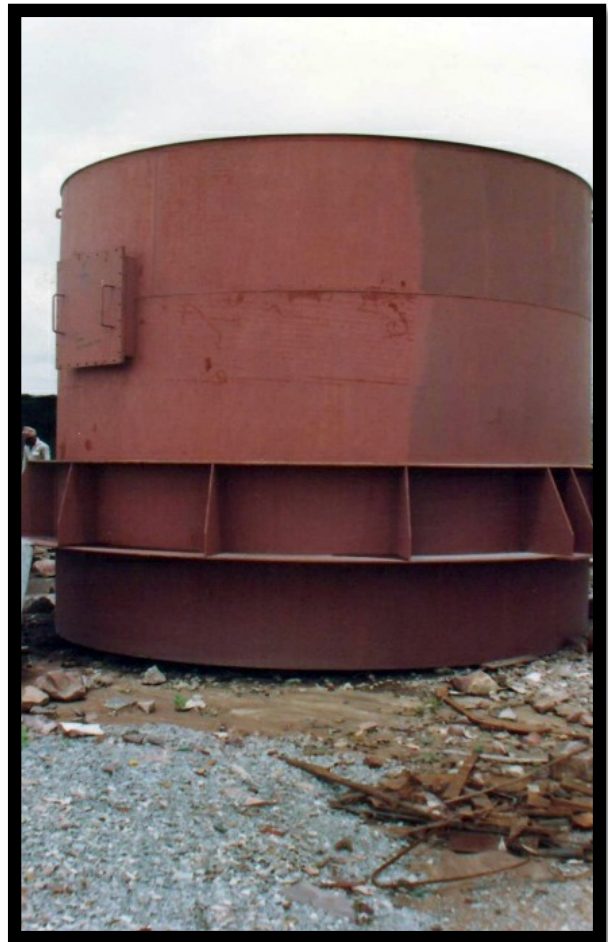
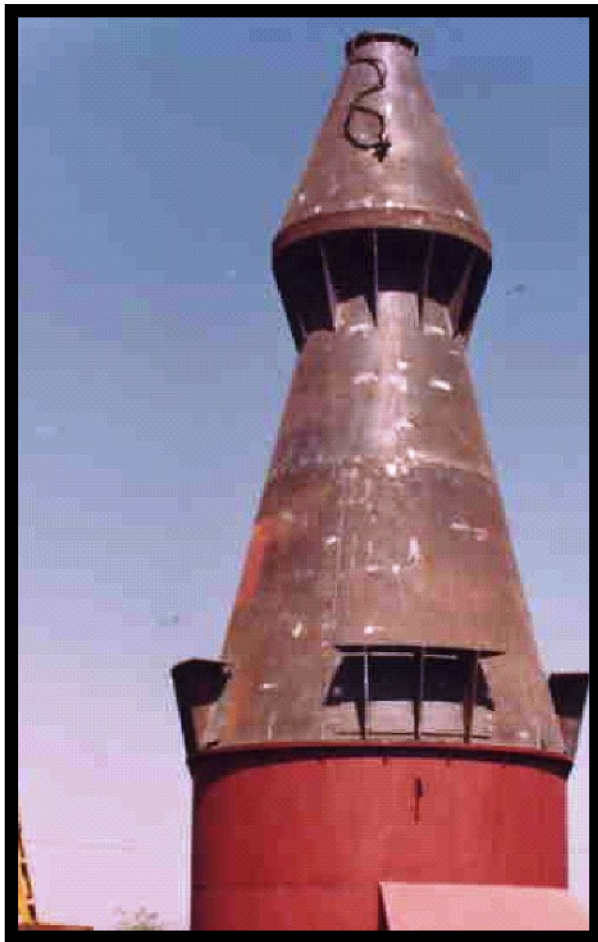
Projects Completed



Product : **DUCT / CONVEYOR**

Client : Duct for BHEL + Conveyor for Babcock (end user Bilai Steel Plant)

Projects Completed



PRODUCT : **CYCLONE**
CLIENT : Cethar Vessels

Indian Boiler Regulation (IBR)

National Thermal Power Corporation (NTPC)

Lloyds Register of Shipping (LRS)

Indian Institute of Quality Assurance (IIQA)

Tata Projects Limited (TPL)

Germanischer Lloyd (GLIS)

Indian Register of Shipping (IRS)

Bureau Veritas (BV)

Autorisation of Self Inspection

Clientele List



ARTSON ENGINEERING LIMITED
A subsidiary of
TATA PROJECTS LIMITED



TOOLFAB ENGINEERING